

T.7N., R.2E., S.L.B.&M.

IN WEBER COUNTY

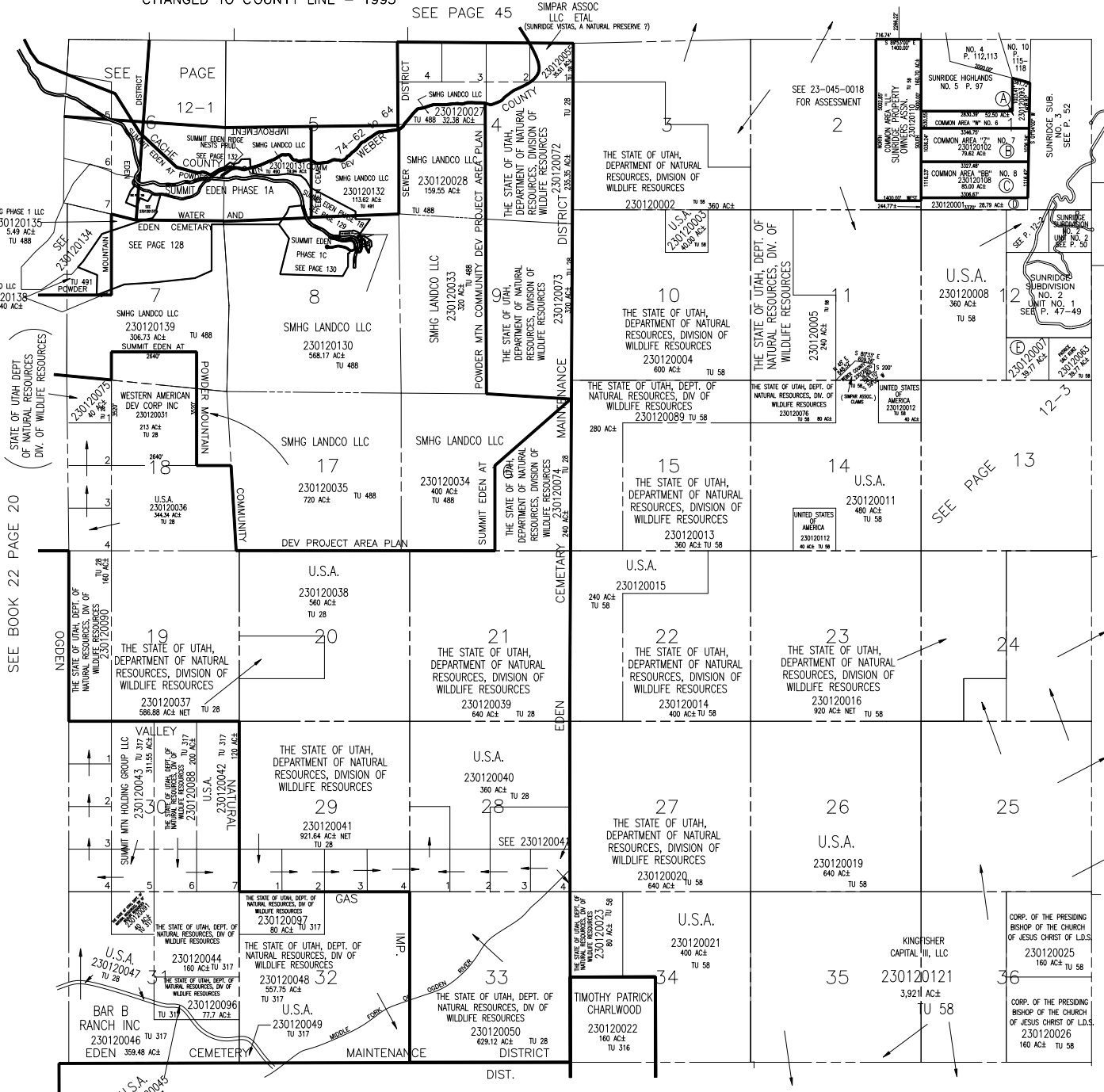
SCALE 1" = 2400'

TAXING UNIT: 28, 58, 90, 227, 231, 317, 488, 490, 491

NOTE: WEBER/CACHE ASSESSMENT LINE
CHANGED TO COUNTY LINE - 1995

ALSO SEE PAGE 12-1,2,3

SEE PAGE 45



- (A) SUNRIDGE PROPERTY OWNERS ASSN. 230120093 52.86 AC±
- (B) SUNRIDGE PROPERTY OWNERS ASSN. 230120102 79.62 AC±
- (C) SUNRIDGE PROPERTY OWNERS ASSN. 230120108 79.62 AC±
- (D) B & B LAND & LIVESTOCK CO. 230120001 28.79 AC±
- (E) MICHAEL J SCHWANKL 230120007 36.77 AC±

SEE BOOK 22 PAGE 20

SEE PAGE 13

SEE PAGE 13